

**From:** [RIGGINS, JAMIE](#)  
**To:** [Beth Axson](#)  
**Subject:** RE: as-built / records request - SCDOT bridge replacement  
**Date:** Friday, March 6, 2020 11:56:04 AM  
**Attachments:** [image001.png](#)  
[image002.png](#)  
[image003.png](#)  
[image004.png](#)  
[image005.png](#)  
[image006.png](#)  
[image007.png](#)  
[image008.png](#)

---

They are 2-45' class 4 poles and a 25 pair cable count.

Thanks

**Jamie Riggins**

[Manager OSP Planning & Engineering Design](#)  
AT&T TECHNOLOGY OPERATIONS – SW District NC\SC

**AT&T**

100 Belton Drive Spartanburg , SC 29301  
**O 864-574-8608** Skype 704-478-7907\ m 704-408-2868 | [jr9080@att.com](mailto:jr9080@att.com)

MOBILIZING **YOUR** WORLD

---

**From:** Beth Axson <[beth.axson@gel.com](mailto:beth.axson@gel.com)>  
**Sent:** Friday, March 06, 2020 11:47 AM  
**To:** RIGGINS, JAMIE <[JR9080@att.com](mailto:JR9080@att.com)>  
**Subject:** RE: as-built / records request - SCDOT bridge replacement

Great. Thank you for this information. I see the two poles on Google Earth street view and measure the distance at 128'. Can you confirm that I'm not misinterpreting that? Also, could you please provide the pair count on the copper line?

Thanks.  
Beth

*Beth Axson*  
*Utility Coordinator | Marketing Manager*



*Subsurface Utility Engineering · Surveying*  
*Geophysical Services · Utility Coordination*

Mailing: PO Box 30712, Charleston, SC 29417  
Shipping: 2040 Savage Road, Charleston, SC 29407  
O: (843) 769-7379 x 1618 | M: (843) 557-5564  
[beth.axson@gel.com](mailto:beth.axson@gel.com) | [www.gel-solutions.com](http://www.gel-solutions.com)



[Subscribe](#) to our quarterly newsletter.

---

CONFIDENTIALITY NOTICE: This e-mail and any files transmitted with it are the property of The GEL Group, Inc. and its affiliates. All rights, including without limitation copyright, are reserved. The proprietary information contained in this e-mail message, and any files transmitted with it, is intended for the use of the recipient(s) named above. If the reader of this e-mail is not the intended recipient, you are hereby notified that you have received this e-mail in error and that any review, distribution or copying of this e-mail or any files transmitted with it is strictly prohibited. If you have received this e-mail in error, please notify the sender immediately and delete the original message and any files transmitted. The unauthorized use of this e-mail or any files transmitted with it is prohibited and disclaimed by The GEL Group, Inc. and its affiliates.

---

---

**From:** RIGGINS, JAMIE <[JR9080@att.com](mailto:JR9080@att.com)>  
**Sent:** Friday, March 6, 2020 11:17 AM  
**To:** Beth Axson <[beth.axson@gel.com](mailto:beth.axson@gel.com)>  
**Subject:** RE: as-built / records request - SCDOT bridge replacement

Beth,

AT&T has a copper cable that crosses the creek for 250' aerially. We are buried on both sides of the creek. We relocated our facilities back in 2014 for this bridge as well as info. Let me know if any additional information is needed.

Thanks

**Jamie Riggins**

[Manager OSP Planning & Engineering Design](#)  
AT&T TECHNOLOGY OPERATIONS – SW District NC\SC

**AT&T**

100 Belton Drive Spartanburg , SC 29301  
**O 864-574-8608** Skype 704-478-7907\ m 704-408-2868 | [jr9080@att.com](mailto:jr9080@att.com)

MOBILIZING **YOUR** WORLD

---

**From:** Beth Axson <[beth.axson@gel.com](mailto:beth.axson@gel.com)>  
**Sent:** Friday, March 06, 2020 10:31 AM  
**To:** RIGGINS, JAMIE <[JR9080@att.com](mailto:JR9080@att.com)>  
**Subject:** RE: as-built / records request - SCDOT bridge replacement

Jamie,

The screenshots below should help you locate the bridge in question. There is a close-up where you can see the bridge a little better. It's small and the creek is somewhat hidden with tree cover. There's also one zoomed out to show additional landmark features. I've attached a PDF of the one-call ticket notice and included a screenshot of the cross street references below, as well. If you have any other questions please let me know.

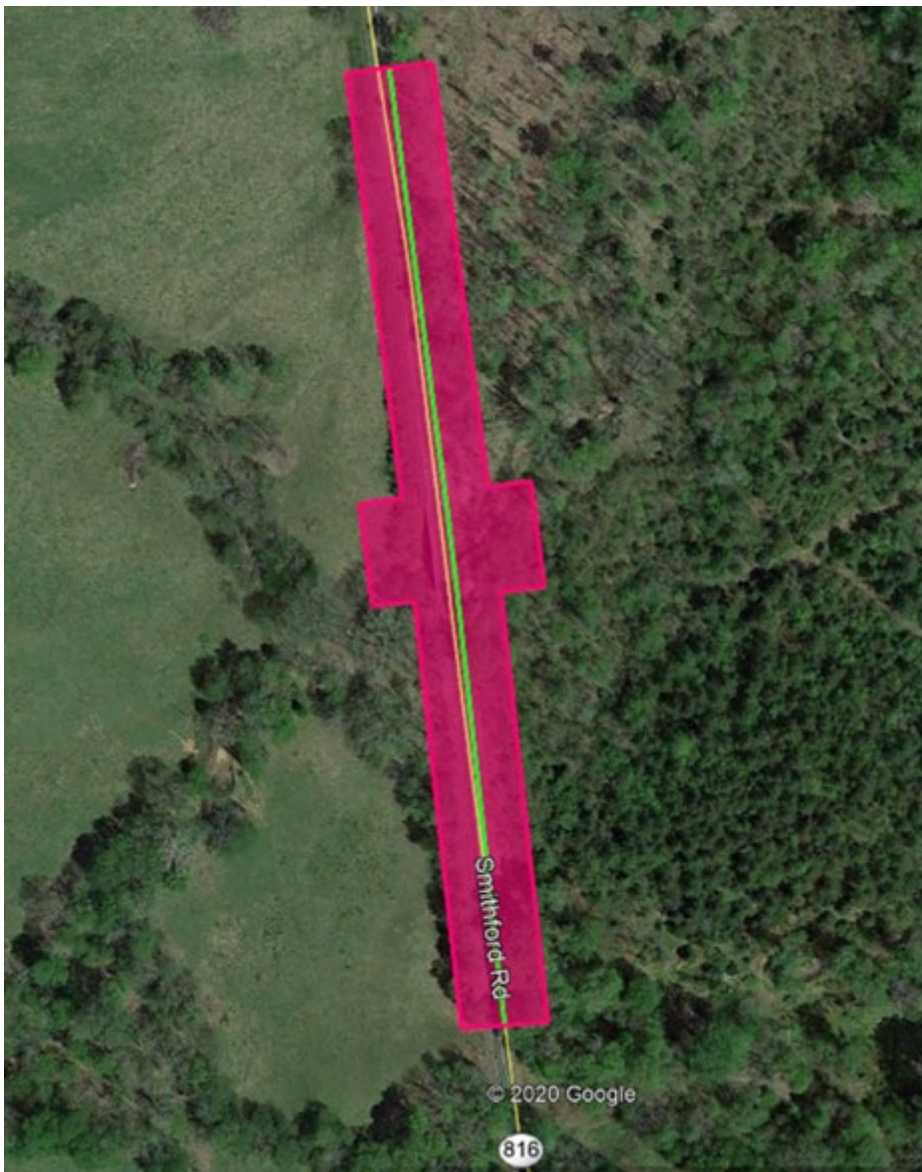
Thank you for your help.  
Beth

INSTRUCTIONS: DESIGN TICKET, NO SITE WORK TO BE COMPLETED AT THIS TIME. LIMITS BEGIN ON SMITHFORD ROAD, 2,292 FEET WEST/NORTHWEST FROM INTERSECTION OF HUNTINGTON ROAD AND SMITHFORD ROAD. GO 1,100 FEET NORTH ON SMITHFORD ROAD

---

DIRECTIONS: LIMITS BEGIN ON SMITHFORD ROAD, 2,292 FEET WEST/NORTHWEST FROM INTERSECTION OF HUNTINGTON ROAD AND SMITHFORD ROAD. GO 1,100 FEET NORTH ON SMITHFORD ROAD





*Beth Axson*  
*Utility Coordinator | Marketing Manager*



*Subsurface Utility Engineering · Surveying*  
*Geophysical Services · Utility Coordination*

Mailing: PO Box 30712, Charleston, SC 29417  
Shipping: 2040 Savage Road, Charleston, SC 29407  
O: (843) 769-7379 x 1618 | M: (843) 557-5564  
[beth.axson@gel.com](mailto:beth.axson@gel.com) | [www.gel-solutions.com](http://www.gel-solutions.com)





[Subscribe](#) to our quarterly newsletter.

---

CONFIDENTIALITY NOTICE: This e-mail and any files transmitted with it are the property of The GEL Group, Inc. and its affiliates. All rights, including without limitation copyright, are reserved. The proprietary information contained in this e-mail message, and any files transmitted with it, is intended for the use of the recipient(s) named above. If the reader of this e-mail is not the intended recipient, you are hereby notified that you have received this e-mail in error and that any review, distribution or copying of this e-mail or any files transmitted with it is strictly prohibited. If you have received this e-mail in error, please notify the sender immediately and delete the original message and any files transmitted. The unauthorized use of this e-mail or any files transmitted with it is prohibited and disclaimed by The GEL Group, Inc. and its affiliates.

---

---

**From:** LWIN, MARK P <[ml0973@att.com](mailto:ml0973@att.com)>  
**Sent:** Friday, March 6, 2020 10:17 AM  
**To:** Beth Axson <[beth.axson@gel.com](mailto:beth.axson@gel.com)>  
**Subject:** RE: as-built / records request - SCDOT bridge replacement

Hi Beth,  
Our road move engineer will respond to you shortly.  
I apologize for the delay.  
Thanks.

Mark Pe Lwin

Engineer  
ATT  
Upstate SE  
100 Belton Dr.  
Spartanburg  
SC 29301  
864-573-4081

---

**From:** Beth Axson <[beth.axson@gel.com](mailto:beth.axson@gel.com)>  
**Sent:** Friday, March 6, 2020 9:51 AM  
**To:** LWIN, MARK P <[ml0973@att.com](mailto:ml0973@att.com)>  
**Cc:** William Dovell <[william.dovell@gel.com](mailto:william.dovell@gel.com)>; [jeff.tallent@gel.com](mailto:jeff.tallent@gel.com)  
**Subject:** RE: as-built / records request - SCDOT bridge replacement

Hi, Mark.  
I'm following up on my email from the other day requesting utility records. I've received Larry's information for the Anderson County bridge so this is the last piece for us at the moment. If you could send us any records you have for the bridge on Smithford Road over Mud Creek in York County at your soonest convenience, it'd be a huge help. We have a pretty tight turn-around time for SCDOT so we're hoping to get all the records as soon as possible. The .kml is attached for reference and please feel free to call or email if you have any questions about it.

Thank you so much for your help.  
Beth

Beth Axson  
Utility Coordinator | Marketing Manager



*Subsurface Utility Engineering · Surveying  
Geophysical Services · Utility Coordination*

Mailing: PO Box 30712, Charleston, SC 29417  
Shipping: 2040 Savage Road, Charleston, SC 29407  
O: (843) 769-7379 x 1618 | M: (843) 557-5564  
[beth.axson@gel.com](mailto:beth.axson@gel.com) | [www.gel-solutions.com](http://www.gel-solutions.com)



[Subscribe](#) to our quarterly newsletter.

---

CONFIDENTIALITY NOTICE: This e-mail and any files transmitted with it are the property of The GEL Group, Inc. and its affiliates. All rights, including without limitation copyright, are reserved. The proprietary information contained in this e-mail message, and any files transmitted with it, is intended for the use of the recipient(s) named above. If the reader of this e-mail is not the intended recipient, you are hereby notified that you have received this e-mail in error and that any review, distribution or copying of this e-mail or any files transmitted with it is strictly prohibited. If you have received this e-mail in error, please notify the sender immediately and delete the original message and any files transmitted. The unauthorized use of this e-mail or any files transmitted with it is prohibited and disclaimed by The GEL Group, Inc. and its affiliates.

---

---

**From:** Beth Axson  
**Sent:** Tuesday, March 3, 2020 7:18 AM  
**To:** [lb0014@att.com](mailto:lb0014@att.com); [ml0973@att.com](mailto:ml0973@att.com)  
**Cc:** William Dovell <[william.dovell@gel.com](mailto:william.dovell@gel.com)>  
**Subject:** as-built / records request - SCDOT bridge replacement

Good morning, Larry and Mark.

Angelo Hines gave me your contact information regarding gathering as-built records for AT&T facilities. We are assisting SCDOT on two bridge replacements, one on Smithford Road over Mud Creek in York County; the other on Timms Mill Road over Six&Twenty Creek in Anderson County. We have been tasked with utility records research to aid SCDOT in an accurate design of these bridge replacements. Our SC811 one-call request indicated AT&T may have facilities on both sites. I've attached Google Earth .kml files for each location. Any records you can provide for these bridge projects is greatly appreciated. If you have any questions about anything, please call me at (843) 769-7379 ext 1618.

Thank you.  
Beth

Beth Axson  
Utility Coordinator | Marketing Manager



*Subsurface Utility Engineering · Surveying  
Geophysical Services · Utility Coordination*

Mailing: PO Box 30712, Charleston, SC 29417  
Shipping: 2040 Savage Road, Charleston, SC 29407  
O: (843) 769-7379 x 1618 | M: (843) 557-5564  
[beth.axson@gel.com](mailto:beth.axson@gel.com) | [www.gel-solutions.com](http://www.gel-solutions.com)



[Subscribe](#) to our quarterly newsletter.

---

CONFIDENTIALITY NOTICE: This e-mail and any files transmitted with it are the property of The GEL Group, Inc. and its affiliates. All rights, including without limitation copyright, are reserved. The proprietary information contained in this e-mail message, and any files transmitted with it, is intended for the use of the recipient(s) named above. If the reader of this e-mail is not the intended recipient, you are hereby notified that you have received this e-mail in error and that any review, distribution or copying of this e-mail or any files transmitted with it is strictly prohibited. If you have received this e-mail in error, please notify the sender immediately and delete the original message and any files transmitted. The unauthorized use of this e-mail or any files transmitted with it is prohibited and disclaimed by The GEL Group, Inc. and its affiliates.

---